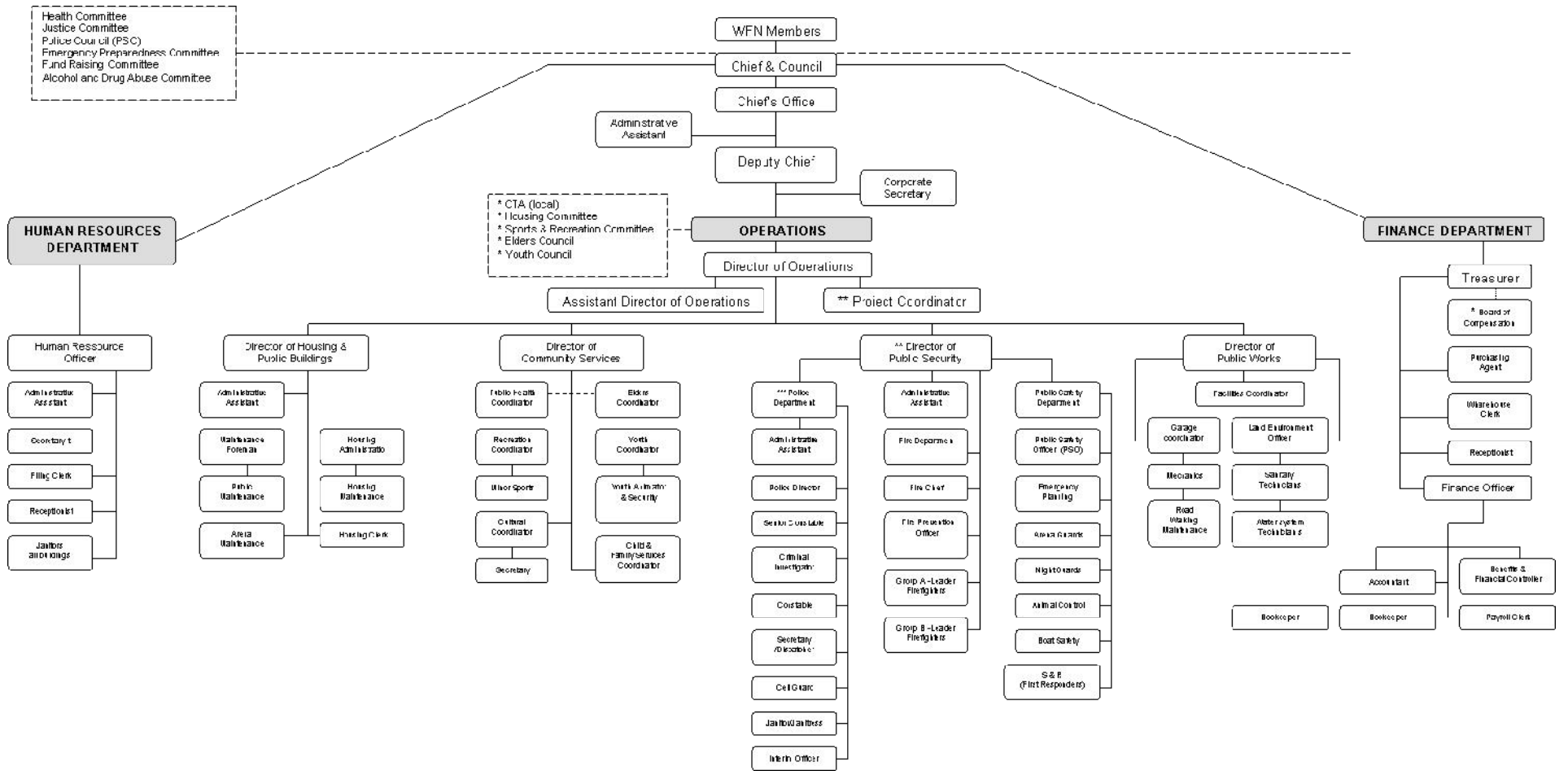


# Whapmagoostui First Nation: Organigramm



- \* Incorporated within the structure to alleviate Chief & Council
- \*\* new positions
- \*\*\* pending regionalization

**External entities**  
 Wco Develop. Corp. Chairperson  
 Cree Settlement Board Commissioner  
 Cree Health Board Representative  
 CRA/GOCEI Board (2 positions)  
 Air Yemincji Board Member  
 CLMB  
 Women's Association